



TruExterior[®]

Siding & Trim

SO AUTHENTIC. SO RELIABLE.
NOTHING COMPARES.

TruExterior® Siding & Trim is a true innovation, invented to address issues common with other exterior products in the industry. It's a siding material that offers a high level of dimensional stability to help reduce expansion and contraction. Plus, TruExterior resists water, making it ideal for applications with ground or masonry contact. TruExterior gives builders the freedom to build beautiful homes with confidence.



Pictured: Nickel Gap, Board & Batten
On the Cover: Nickel Gap, Shiplap





Phenomenal Beauty & Performance.

TruExterior® Siding & Trim offers historically accurate looks with low maintenance and high performance.

BEAUTY IS IN EVERY DETAIL

- Available in a wide range of siding and trim profiles in both woodgrain and smooth finishes
- Craftsman Collection™ features historically accurate siding profiles in bold, crisp shapes
- Authentic look of cedar siding profiles
- Enables tighter gaps due to minimal movement
- Corners can be mitered to create clean lines
- Paint in any color to create the look you want, including darker tones

LOW MAINTENANCE & DURABILITY

- Resists rot and termite attacks*
- Maintains high level of thermal stability* - better than PVC or vinyl
- Absorbs minimal moisture*

PERFORMANCE

- Class A fire rated per ASTM E84 and WUI listed
- Suitable for ground and masonry contact
- Can be used in moisture-prone areas

WARRANTY

- 20 year limited warranty

Remarkable Workability.

TruExterior Siding & Trim offers lasting look while eliminating the need for gluing, gapping and other cumbersome and costly installation techniques.

TOOLS

- Easy to work with, cut and mill
- Installed using proven woodworking tools and methods
- Carbide-tipped blades and bits are recommended for a longer tool life

FASTENING

- Accepts common high-quality, exterior-grade fasteners
- Can be fastened close to the edge
- No need for pre-drilling
- Resists splitting

PAINTING

- TruExterior products come pre-primed and require painting to finish the look
- Can be painted with any color of high-grade exterior paint – including dark colors
- No need to prime end cut
- Paint adheres well due to the thermal stability and the minimal moisture absorption
- Promotes exceptional paint durability, paint lasts longer than on wood*

* Please see TruExterior Siding & Trim Limited Warranties and Product Data Sheets for proprietary test results, located at TruExterior.com. The warranties found there are the sole warranties applicable to TruExterior products. Always follow local building codes and construction best practices. See the complete Installation Guidelines for TruExterior Siding & Trim at TruExterior.com.

Pictured: Channel Bevel



Pictured: Nickel Gap



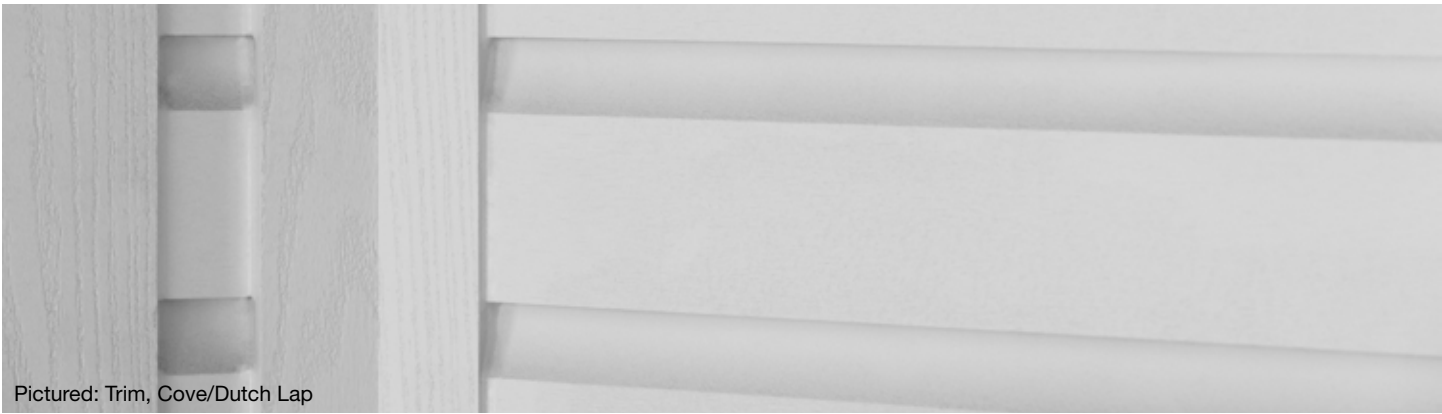
Pictured: Nickel Gap, Trim



Pictured: Channel, Board-and-Batten



Pictured: Shiplap



Pictured: Trim, Cove/Dutch Lap



Pictured: Nickel Gap



Pictured: Trim



Pictured: Cove/Dutch Lap



Pictured: Cove/Dutch Lap

Craftsman Collection™

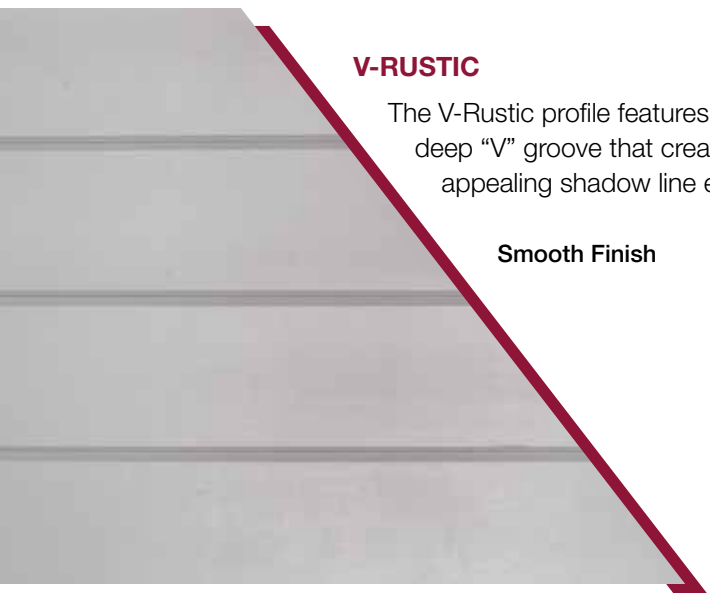
The TruExterior Siding Craftsman Collection™ offers a variety of authentic, full-thickness profiles with bold, defined shapes and the natural aesthetic of traditional wood siding, all without the maintenance and upkeep associated with exterior wood products.

Historically and architecturally accurate profiles—Channel, Channel Bevel, Cove/Dutch Lap, Nickel Gap, Shiplap and V-Rustic—are the ideal solution for homeowners who desire the look, feel and character of authentic wood siding while avoiding rotting, excessive swelling and termite attacks.



Pictured Top Left to Right: Channel Bevel, Nickel Gap

Pictured Bottom Left to Right: Nickel Gap, Channel Bevel

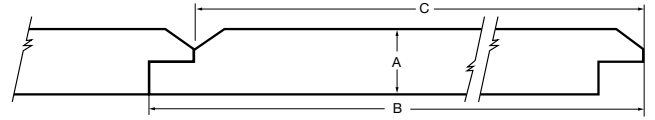


V-RUSTIC

The V-Rustic profile features a deep “V” groove that creates an appealing shadow line effect.

Smooth Finish

Nominal Size	Actual Thickness (A)	Actual Width (B)	Reveal (C)
1 x 6	11/16"	5-1/2"	5"
1 x 8	11/16"	7-1/2"	7"
1 x 10	11/16"	9-1/2"	9"

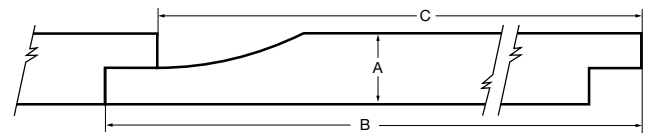


COVE/DUTCH LAP

The Cove/Dutch Lap profile features a subtle curve that creates a unique, eased appearance.

Smooth Finish

Nominal Size	Actual Thickness (A)	Actual Width (B)	Reveal (C)
1 x 6	11/16"	5-1/2"	4-31/32"
1 x 8	11/16"	7-1/4"	6-23/32"
1 x 10	11/16"	9-1/4"	8-23/32"

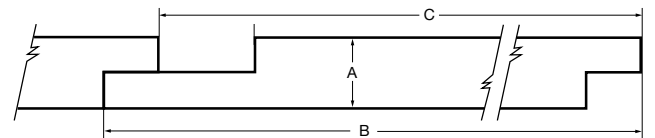


CHANNEL

The Channel profile's wide groove creates a rich shadow line effect.

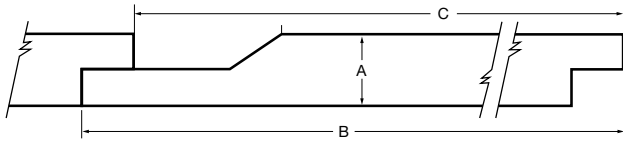
Smooth Finish

Nominal Size	Actual Thickness (A)	Actual Width (B)	Reveal (C)
1 x 6	11/16"	5-1/2"	4-31/32"
1 x 8	11/16"	7-1/4"	6-23/32"
1 x 10	11/16"	9-1/4"	8-23/32"



TruExterior Siding comes pre-primed and does require paint.

Nominal Size	Actual Thickness (A)	Actual Width (B)	Reveal (C)
1 x 6	11/16"	5-1/2"	4-31/32"
1 x 8	11/16"	7-1/2"	6-31/32"
1 x 10	11/16"	9-1/2"	8-31/32"



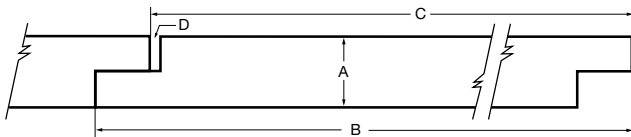
CHANNEL BEVEL

The Channel Bevel profile features a channel-style joint with an angled edge.

Smooth Finish



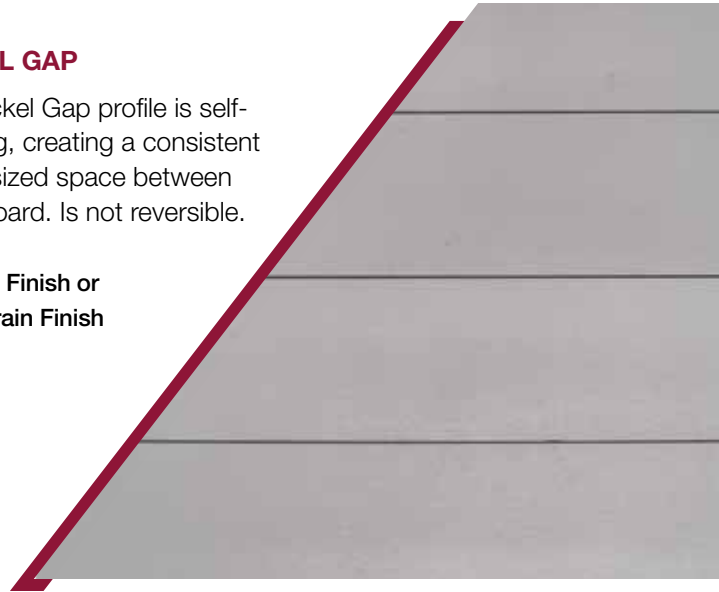
Nominal Size	Actual Thickness (A)	Actual Width (B)	Reveal (C)	Gap (D)
1 x 4	11/16"	3-1/2"	3-3/32"	5/64"
1 x 6	11/16"	5-1/2"	5-3/32"	5/64"
1 x 8	11/16"	7-1/4"	6-13/16"	5/64"
1 x 10	11/16"	9-1/4"	8-13/16"	5/64"



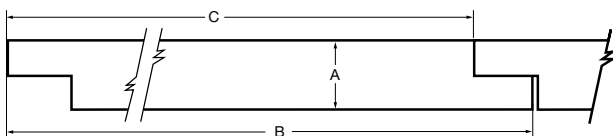
NICKEL GAP

The Nickel Gap profile is self-gapping, creating a consistent nickel-sized space between each board. Is not reversible.

Smooth Finish or Woodgrain Finish



Nominal Size	Actual Thickness (A)	Actual Width (B)	Reveal (C)
1 x 4	11/16"	3-1/2"	3"
1 x 6	11/16"	5-1/2"	5"
1 x 8	11/16"	7-1/4"	6-3/4"
1 x 10	11/16"	9-1/4"	8-3/4"



SHIPLAP

The Shiplap profile is edge-matched for a tight joint appearance. It is intended to be installed with the finished surface exposed and is not reversible.

Smooth Finish or Woodgrain Finish



TruExterior Siding comes pre-primed and does require paint.

Beadboard

Including single and double profiles, TruExterior Beadboard is ideal for porch ceilings, soffits and decorative wall applications, and allows for a variety of installations, as it can be attached in either parallel or perpendicular directions.

Its “tongue-and-groove” design results in a clean look that can be reversed to offer a contemporary “V-groove” appearance.

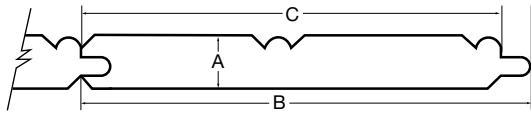


Pictured: V-Groove Pattern



Pictured: Beaded Pattern

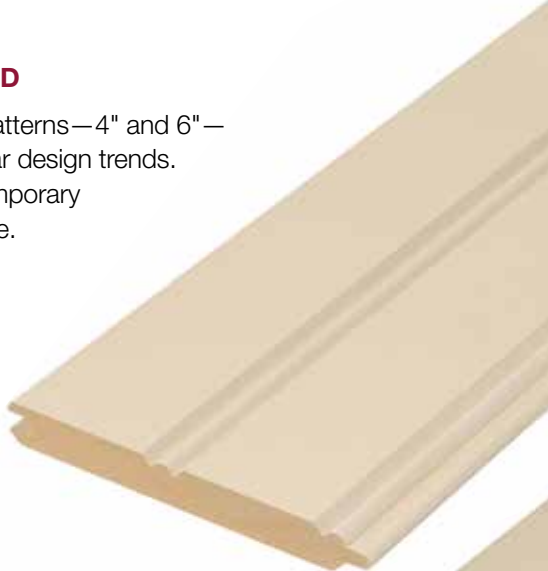
Nominal Size	Actual Thickness (A)	Actual Width (B)	Reveal (C)
5/8 x 4	5/8"	3-15/32"	3-5/32"
5/8 x 6	5/8"	5-5/16"	4-15/16"



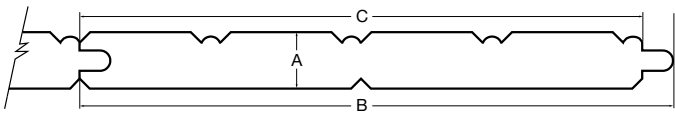
SINGLE BEADBOARD

Two distinct beaded patterns—4" and 6"—to suit the most popular design trends. Reversible for a contemporary “V-Groove” appearance.

Smooth Finish



Nominal Size	Actual Thickness (A)	Actual Width (B)	Reveal (C)
5/8 x 8	5/8"	6-9/16"	6-7/32"
5/8 x 12	5/8"	10-1/4"	9-29/32"



DOUBLE BEADBOARD

The same appearance as the single-profile products, but with twice the coverage. Reversible for a contemporary “V-Groove” appearance.

Smooth Finish



TruExterior Beadboard comes pre-primed and does require paint.

Trim

Designed to be used in non-load-bearing applications, TruExterior Trim is suitable for ground and masonry contact and moisture-prone areas, which makes it ideal for exterior trim applications such as fascia, door trim, soffits, rake boards and a variety of other applications. There is no need to prime ends or field cuts. Plus, it can be painted any color. TruExterior Trim accepts common high-quality, exterior-grade fasteners and can be installed using standard woodworking tools and methods.





5/8 Trim Sizes		1X Trim Sizes		5/4 Trim Sizes		2X Trim Sizes	
Nominal	Actual	Nominal	Actual	Nominal	Actual	Nominal	Actual
—	—	—	—	—	—	2 x 2	1-1/2" x 1-1/2"
—	—	1 x 3	3/4" x 2-1/2"	5/4 x 3	1" x 2-1/2"	—	—
5/8 x 4	5/8" x 3-1/2"	1 x 4	3/4" x 3-1/2"	5/4 x 4	1" x 3-1/2"	2 x 4	1-1/2" x 3-1/2"
—	—	1 x 5	3/4" x 4-1/2"	5/4 x 5	1" x 4-1/2"	—	—
5/8 x 6	5/8" x 5-1/2"	1 x 6	3/4" x 5-1/2"	5/4 x 6	1" x 5-1/2"	2 x 6	1-1/2" x 5-1/2"
5/8 x 8	5/8" x 7-1/4"	1 x 8	3/4" x 7-1/4"	5/4 x 8	1" x 7-1/4"	2 x 8	1-1/2" x 7-1/4"
5/8 x 10	5/8" x 9-1/4"	1 x 10	3/4" x 9-1/4"	5/4 x 10	1" x 9-1/4"	2 x 10	1-1/2" x 9-1/4"
5/8 x 12	5/8" x 11-1/4"	1 x 12	3/4" x 11-1/4"	5/4 x 12	1" x 11-1/4"	2 x 12	1-1/2" x 11-1/4"

TruExterior Trim is reversible with woodgrain on one side and a smooth finish on the reverse. Available in a 16' length.

Reversible Smooth/Woodgrain Finish

BOARD-AND-BATTEN SIDING

Whether a Modern Farmhouse design or creating accents on a gable, board-and-batten is one of the hottest trends in home exterior design. And it's easy to create the board-and-batten look using just TruExterior Trim.



TruExterior Trim comes pre-primed and does require paint.

Accessories

TruExterior Siding & Trim Accessories make it easy to create polished, professional-looking siding and trim installations. Decorative yet functional, the poly-ash accessories are designed to go where other materials can't, making them the perfect complement to cedar, fiber cement and other traditional siding products, as they are suitable for ground and masonry contact.



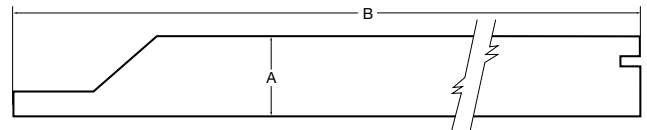
SKIRT BOARD

Provides a decorative yet functional way to create the required clearance between siding and grade.

Available Finishes:

- Smooth
- Woodgrain

Nominal Size	Actual Thickness (A)	Actual Width (B)
1 x 6	3/4"	5-1/2"
1 x 8	3/4"	7-1/4"
5/4 x 6	1"	5-1/2"
5/4 x 8	1"	7-1/4"



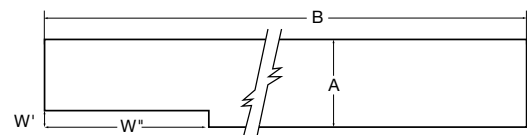
WINDOW POCKET RABBETED TRIM

The rabbeted groove helps trim to sit flush over the window's nailing flange, eliminating the need for cuts or shims.

Available Finishes:

- Smooth
- Woodgrain

Nominal Size	Actual Thickness (A)	Actual Width (B)	Window Pocket (W' x W")
5/4 x 4	1"	3-1/2"	3/16" x 1-7/8"
5/4 x 6	1"	5-1/2"	3/16" x 1-7/8"
5/4 x 8	1"	7-1/4"	3/16" x 1-7/8"



TruExterior Accessories come pre-primed and do require paint.



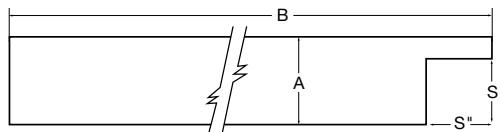
Nominal Size	Actual Thickness (A)	Actual Width (B)	Siding Pocket (S' x S'')
5/4 x 3	1"	2-1/2"	3/4" x 3/4"
5/4 x 4	1"	3-1/2"	3/4" x 3/4"
5/4 x 5	1"	4-1/2"	3/4" x 3/4"
5/4 x 6	1"	5-1/2"	3/4" x 3/4"
5/4 x 8	1"	7-1/4"	3/4" x 3/4"

SIDING POCKET RABBETED TRIM

Perfect for end wall terminations, this trim with a 3/4" siding pocket accepts all TruExterior Siding profiles.

Available Finishes:

- Smooth
- Woodgrain



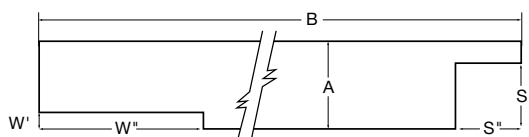
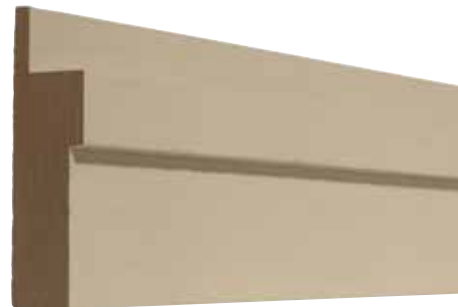
Nominal Size	Actual Thickness (A)	Actual Width (B)	Window Pocket (W' x W'')	Siding Pocket (S' x S'')
5/4 x 4	1"	3-1/2"	3/16" x 1-7/8"	3/4" x 3/4"
5/4 x 6	1"	5-1/2"	3/16" x 1-7/8"	3/4" x 3/4"
5/4 x 8	1"	7-1/4"	3/16" x 1-7/8"	3/4" x 3/4"

WINDOW AND SIDING POCKET RABBETED TRIM

The ultimate accessory to build a neat, professional-looking window surround.

Available Finishes:

- Smooth
- Woodgrain



TruExterior Accessories come pre-primed and do require paint.

TruExterior® Siding & Trim Reference Guide

SUSTAINABILITY

The sustainable properties of TruExterior Siding & Trim are a result of a combination of proprietary polymer chemistry and highly refined, recovered coal combustion products (fly ash).

- Contains a minimum of 70% recycled content—verified by SCS Global Services





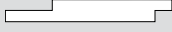
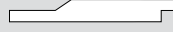
CODE LISTINGS



TruExterior Siding & Trim have undergone rigorous internal and third-party testing to provide building officials, architects, contractors, specifiers, designers and others with reliable, high-performing products.

- California’s Wildland-Urban Interface (WUI) listed—Beadboard, Siding, and Trim
- Texas Department of Insurance (TDI) EC-92—Siding
- Florida Building Code FL17285—Siding
- Intertek CCRR-0300


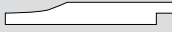
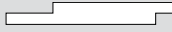
PROJECT ESTIMATOR




V-Rustic		Cove/Dutch Lap	
			
Nominal	Boards per square	Nominal	Boards per square
1 x 6	15	1 x 6	15
1 x 8	11	1 x 8	12
1 x 10	9	1 x 10	9

Channel		Channel Bevel	
			
Nominal	Boards per square	Nominal	Boards per square
1 x 6	15	1 x 6	15
1 x 8	12	1 x 8	11
1 x 10	9	1 x 10	9


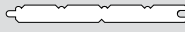
Nickel Gap		Shiplap	
			
Nominal	Boards per square	Nominal	Boards per square
1 x 4	24	1 x 4	24
1 x 6	15	1 x 6	15
1 x 8	11	1 x 8	11
1 x 10	9	1 x 10	9

Craftsman Collection Siding

V-Rustic		Cove/Dutch Lap		Channel	
					
Nominal	Actual	Nominal	Actual	Nominal	Actual
1 x 6	11/16" x 5-1/2"	1 x 6	11/16" x 5-1/2"	1 x 6	11/16" x 5-1/2"
1 x 8	11/16" x 7-1/2"	1 x 8	11/16" x 7-1/4"	1 x 8	11/16" x 7-1/4"
1 x 10	11/16" x 9-1/2"	1 x 10	11/16" x 9-1/4"	1 x 10	11/16" x 9-1/4"

Channel Bevel		Nickel Gap		Shiplap	
					
Nominal	Actual	Nominal	Actual	Nominal	Actual
1 x 6	11/16" x 5-1/2"	1 x 4	11/16" x 3-1/2"	1 x 4	11/16" x 3-1/2"
1 x 8	11/16" x 7-1/2"	1 x 6	11/16" x 5-1/2"	1 x 6	11/16" x 5-1/2"
1 x 10	11/16" x 9-1/2"	1 x 8	11/16" x 7-1/4"	1 x 8	11/16" x 7-1/4"
		1 x 10	11/16" x 9-1/4"	1 x 10	11/16" x 9-1/4"





Beadboard

Single		Double	
			
Nominal Size	Actual	Nominal	Actual
5/8 x 4	5/8" x 3-15/32"	5/8 x 8	5/8" x 6-9/16"
5/8 x 6	5/8" x 5-5/16"	5/8 x 12	5/8" x 10-1/4"

Trim

5/8 Trim Sizes		1X Trim Sizes		5/4 Trim Sizes		2X Trim Sizes	
Nominal	Actual	Nominal	Actual	Nominal	Actual	Nominal	Actual
—	—	—	—	—	—	2 x 2	1-1/2" x 1-1/2"
—	—	1 x 3	3/4" x 2-1/2"	5/4 x 3	1" x 2-1/2"	—	—
5/8 x 4	5/8" x 3-1/2"	1 x 4	3/4" x 3-1/2"	5/4 x 4	1" x 3-1/2"	2 x 4	1-1/2" x 3-1/2"
—	—	1 x 5	3/4" x 4-1/2"	5/4 x 5	1" x 4-1/2"	—	—
5/8 x 6	5/8" x 5-1/2"	1 x 6	3/4" x 5-1/2"	5/4 x 6	1" x 5-1/2"	2 x 6	1-1/2" x 5-1/2"
5/8 x 8	5/8" x 7-1/4"	1 x 8	3/4" x 7-1/4"	5/4 x 8	1" x 7-1/4"	2 x 8	1-1/2" x 7-1/4"
5/8 x 10	5/8" x 9-1/4"	1 x 10	3/4" x 9-1/4"	5/4 x 10	1" x 9-1/4"	2 x 10	1-1/2" x 9-1/4"
5/8 x 12	5/8" x 11-1/4"	1 x 12	3/4" x 11-1/4"	5/4 x 12	1" x 11-1/4"	2 x 12	1-1/2" x 11-1/4"

Accessories

Skirt Board		Window Pocket Rabbeted Trim		Siding Pocket Rabbeted Trim		Window and Siding Pocket Rabbeted Trim	
							
Nominal	Actual	Nominal	Actual	Nominal	Actual	Nominal	Actual
1 x 6	3/4" x 5-1/2"	5/4 x 4	1" x 3-1/2"	5/4 x 3	1" x 2-1/2"	5/4 x 4	1" x 3-1/2"
1 x 8	3/4" x 7-1/4"	5/4 x 6	1" x 5-1/2"	5/4 x 4	1" x 3-1/2"	5/4 x 6	1" x 5-1/2"
5/4 x 6	1" x 5-1/2"	5/4 x 8	1" x 7-1/4"	5/4 x 5	1" x 4-1/2"	5/4 x 8	1" x 7-1/4"
5/4 x 8	1" x 7-1/4"			5/4 x 6	1" x 5-1/2"		
				5/4 x 8	1" x 7-1/4"		

Note: All TruExterior Siding, Trim, Beadboard and Accessory products are available in standard 16' length.



BE BOUNDLESS™

THE PRODUCTS TO DO EVERYTHING. THE POWER TO DO EVEN MORE.

We're answering "what ifs" on a whole new level—from the solutions we create to the dreams we build. We have the tools and technology to tell design stories on a bigger scale and on a more personal level. There are no limits to how far we innovate, how deeply we express, how strongly we commit and how boldly we go.

Together let's Be Boundless™.