

ENGLISH

EDGELOC[®] Hidden Fastener

INSTALLATION INSTRUCTIONS & HELPFUL TIPS

EDGELOC Hidden Fasteners were designed exclusively to install TimberTech EDGE Premier, Prime and Prime+ grooved boards.

Always be sure to check and cut the factory cut ends of all boards to ensure they are square.

IMPORTANT! Read all instructions carefully and completely to ensure proper installation.

WARNING! Parts have sharp points and edges. Use caution when handling and installing.

COVERAGE: For approximate clips required, multiply the square feet of decking by 1.75 (Example: 100 sq. ft. X 1.75 = 175 clips)

ADDITIONAL INFORMATION

- In areas with obstructed airflow, such as roofs and on-grade applications, a minimum of 1-1/2" sleeper system is required.
- Sleeper system must be supported by and connected to the substructure over which the deck is built.
- To further minimize expansion and contraction, proper ventilation and airflow should be considered.
- To aid water run-off the deck should slope 1/2" for every 8' away from the house.
- Do not use EDGELOC Hidden Fasteners for stair installations.
- When top-down fastening TimberTech composite decking:
 - Fasten no closer than 3/4" from outside edge of each board.
 - Pre-drilling is required when within 1-1/2" of the ends of the board and for temperatures below 45 degrees F.

INSTALLATION PROCESS

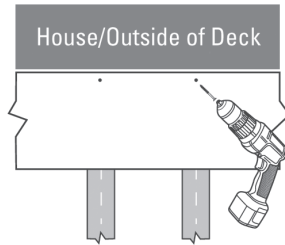
TOOLS & REQUIRED: • Safety glasses • 18V variable speed cordless drill (Speed & torque limit set to low for best results)

1 INSTALL THE FIRST PLANK

Recommended fasteners include Cortex[®] hidden fasteners and TOPLoc[®] color-matched deck fasteners. Follow TimberTech predrilling guidelines for the selected fastener.

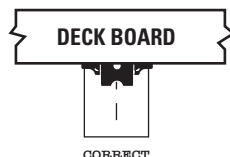
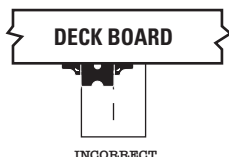
WARNING:

Cortex screws cannot be used with scalloped profile boards.



2 POSITION EDGELOC FASTENERS

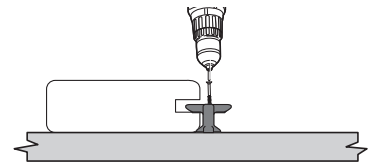
- Fully insert the EDGELOC fastener into grooved edge of plank. Screw hole should be lined up with the center of the support joist.



3 BEGIN DRIVING SCREW

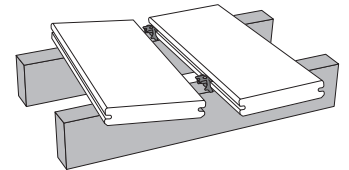
- Use an 18V Cordless drill in the low speed and low torque setting.
- Drive preset screw at a 90° angle through the clip until first contact with the deck board - **DO NOT OVERTIGHTEN.**
- Apply downward pressure on the decking while driving the screw.
- Pull the remaining clips off the installed clip to sever the collation.

IMPORTANT TIP: Do not overdrive the clip. This will make next board entry difficult. Leaving the clip slightly loose will allow you to apply the next board and tighten previous row of clips.



4 INSTALL NEXT BOARD

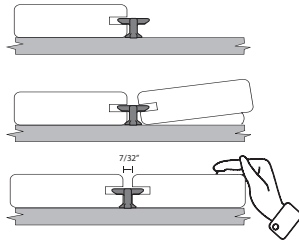
- Place the next plank into position against the installed clips. Slightly raise the outer edge of the plank being installed and slide it onto the clips.
- Tapping the board onto the clips may be required to achieve the desired gap. Use a scrap piece of lumber against the side of the deck plank. Do not use a hammer on the side of the deck plank as damage may occur.
- Do not overdrive- clips are self spacing.



INSTALLATION PROCESS

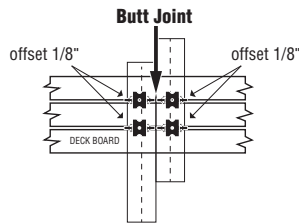
5 COMPLETING BOARD INSTALLATION

- Check gapping between boards for consistency. Apply hand pressure to ensure board is fully installed.
- With the next board installed, go back and tighten the previous row of clips.
- To complete the installation, recheck all connections and tighten the loose clips.
- Repeat steps until deck is complete.
- The last deck board will need to have the outside edge attached using Cortex or TOPLoc fasteners.
- It may be necessary to rip the last board to fit.



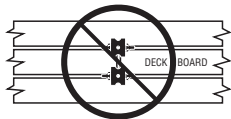
6 HOW TO INSTALL AT BUTT JOINTS

- Joists at butt joints must be doubled up for proper fastener attachment.
- Install fasteners as detailed in illustration. Note that the left and right clips have been placed approximately 1/8" offset from center to accommodate the legs of the clips.



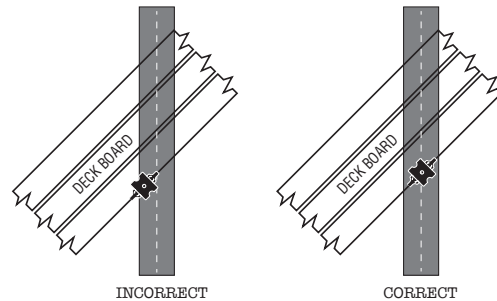
WARNING:

Do not use 2 clips only at butt joints



7 HOW TO INSTALL ON ANGLES

- When the deck is located in a corner of the house, start with a small triangular piece of decking in the corner and work your way out.
- It is important to center the clip on the joist for proper installation.



8 REMOVING AND REPLACING A DECK BOARD

- Remove the screws on both sides of board to be replaced using the provided T15 bit.
- Take care to not damage the deck boards on either side of the gap.
- You can now pry up your deck board without damage.
- Before installing a new board, clear all debris from the top of the exposed joist.
- To replace a board, install EDGELoc clips into one side of the exposed grooves. The clips should be left just slightly loose to facilitate installation of the subsequent deck board.
- Once the board is set into position, use EDGELoc Clips, Cortex or TOPLoc to fasten the remaining edge of the replacement board.

WARNING:

Cortex cannot be used with scalloped profile boards.